



PRO

SWB 3.5T GVW (ONLY BOX CONVERSION)

3.0DCI 150PS 6 SPEED SEMI-AUTO

MWB 3.5T GVW

2.5DCI 130PS 6 SPEED

3.0DCI 150PS 6 SPEED SEMI-AUTO

MWB 4.5T GVW

2.5DCI 130PS 6 SPEED

3.0DCI 150PS 6 SPEED

SINGLE TILT CAB OR DOUBLE FIXED CAB
TWIN REAR WHEELS

ADDITIONAL SPEC TO BASIC+ GRADE

COMFORT AND CONVENIENCE

- Easy Hill Start
- Power and heated mirrors
- Rear heater (Double cab versions)
- Battery high capacity 110 Ah/12V

OPTIONS

- Metallic Paint
- Digital Tachograph*
- Passenger airbag
- Front Air Conditioning
- Nissan Connect

3.5T BODY OPTIONS

- Chassis
- Tipper
- Dropside
- Box van (Single cab only)
- Freezer / Chiller Box (Single cab only)

PRO+

LWB 3.5T GVW

2.5DCI 130PS 6 SPEED

3.0DCI 150PS 6 SPEED

3.0DCI 150PS 6 SPEED SEMI-AUTO

LWB 4.5T GVW

2.5DCI 130PS 6 SPEED

3.0DCI 150PS 6 SPEED

SINGLE TILT CAB OR DOUBLE FIXED CAB
TWIN REAR WHEELS

ADDITIONAL SPEC TO PRO GRADE

COMFORT AND CONVENIENCE

- Interior trim on back panel and pillars (only Single cab version)
- Front fog lamp

OPTIONS

- Metallic Paint
- Digital Tachograph*
- Passenger airbag
- Front Air Conditioning
- Nissan Connect

3.5T BODY OPTIONS

- Chassis
- Tipper (Double cab only)
- Dropside (on Single cab, only wide body available)
- Box van (Single cab only)

NEW CABSTAR TECHNICAL DATA SHEET

CAB		Single Cab	Single Cab	Single Cab	Double Cab	Single Cab	Double Cab	Single Cab
ENGINE		YD25DDTi (Lo)	YD25DDTi (Mi)			YD25DDTi (Mi)		ZD30
TRANSMISSION		M5-35A (5 sp)	M5-35A (5 sp)	6S380 (6 sp)		6S380 (6 sp)		6S380
GVW		3.4	3.5					
REAR WHEELS		SINGLE	TWIN					
WHEELBASE		SWB	SWB	MWB	MWB	LWB	LWB	LWB
ENGINE PERFORMANCE (according to EC 80/1269 directive)								
Maximum engine power	kW(hp)/rpm	81 (110) @ 3.600	96 (130) @ 3.600			96 (130) @ 3.600		110 (150)
Maximum engine torque	Nm/rpm	250 @ 1.600	270 @ 1.800			270 @ 1.800		350 @
Emission class		Euro4 (70/220/EEC amended by 2003/76/EC)						
ENGINE DESCRIPTION								
No. of cylinders, configuration		4, in line				4, in line		4, in
Valves per cylinder		4, DOHC				4, DOHC		4, DO
Air intake system		Turbo intercooler				Turbo intercooler		Turbo in
Control system		ECCS				ECCS		EC
Engine displacement	cc	2488				2488		29
Bore x Stroke	mm	89 x 100				89 x 100		96 x
Compression ratio		16.5 :1				16.5 :1		16.
Fuel type		Diesel				Diesel		Die
Fuel supply		Direct Injection + Common Rail				Direct Injection + Common Rail		Direct Injection
Emission control system		EGR + Catalyst				EGR + Catalyst		EGR +
Electrical system	V	12				12		1
Starter	Kw	2.2				2.2		2
Alternator	Amps	130				130		1
TRANSMISSION SPECIFICATION								
Clutch type		Dry, single plate with Hydraulic control						
Transmission type		5 speed M/T			6 speed M/T		6 speed M/T	
Gear ratio	1st	4.660			5.375		5.375	
	2nd	2.390			3.154		3.154	
	3rd	1.380			2.041		2.041	
	4th	1.000			1.365		1.365	
	5th	0.830			1.000		1.000	
	6th	N/A			0.790		0.790	
	Rev	4.094			4.830		4.830	
Final Drive type		Single reduction of hypoid type	Limited Slip Differential					
Final Drive Ratio		4.111			4.111		4.111	

EET

Double Cab	Single Cab					Double Cab	Single Cab					Double Cab	Single Cab					Double Cab
Kai (Hi)	ZD30 Kai (Hi)						YD25DDTi (Mi)						ZD30 Kai (Hi)					
D (6 sp)	6AS420						6S380 (6sp)											
	3.5						4.5											
	TWIN						TWIN											
LWB	SWB	MWB	LWB	MWB	LWB	MWB	LWB	MWB	LWB	MWB	LWB	MWB	LWB	MWB	LWB			
@ 3.400	110 (150) @ 3.400						96 (130) @ 3.600						110 (150) @ 3.400					
@ 1.600	350 @ 1.600						270 @ 1.800						350 @ 1.600					
	Euro4 (70/220/EEC amended by 2003/76/EC)						Euro4 (70/220/EEC amended by 2003/76/EC)											
in line	4, in line						4, in line						4, in line					
DOHC	4, DOHC						4, DOHC						4, DOHC					
intercooler	Turbo intercooler						Turbo intercooler						Turbo intercooler					
ECCS	ECCS						ECCS						ECCS					
253	2953						2488						2953					
x 102	96 x 102						89 x 100						96 x 102					
9 : 1	16,9 : 1						16,5 : 1						16,9 : 1					
iesel	Diesel						Diesel						Diesel					
+ Common Rail	Direct Injection + Common Rail						Direct Injection + Common Rail						Direct Injection + Common Rail					
Catalyst	EGR + Catalyst						EGR + Catalyst						EGR + Catalyst					
2	12						12						12					
.5	2.5						2.2						2,5					
35	135						130						135					
	Dry, single plate with Hydraulic control						Dry, single plate with Hydraulic control											
ed M/T	6 speed Ro						6 speed M/T											
375	5.152						5.375											
154	3.022						3.154											
041	1.956						2.041											
365	1.360						1.365											
000	1.000						1.000											
790	0.799						0.790											
330	4.640						4.830											
Single reduction of hypoid type						Limited Slip Differential						Single reduction of hypoid type						
375	4.375						4.111						4.375					

NEW CABSTAR TECHNICAL DATA SHEET

CAB		Single Cab	Single Cab	Single Cab	Double Cab	Single Cab	Double Cab	Single Cab	
ENGINE		YD25DDTi (Lo)	YD25DDTi (Mi)			YD25DDTi (Mi)		ZD	
TRANSMISSION		M5-35A (5 sp)	M5-35A (5 sp)	6S380 (6 sp)		6S380 (6 sp)		6S	
GVW		3.4	3.5						
REAR WHEELS		SINGLE				TWIN			
WHEELBASE		SWB	SWB	MWB	MWB	LWB	LWB	LWB	
CHASSIS									
Frame type		C Section steel longitudinal side members and riveted cross members							
Frame width		mm	752						
Section		mm	128 x 52 x 4						
Front Suspension		Independent, Double Wishbone with transversal springs, with shock absorbers and							
Rear Suspension		Rigid axle, Parabolic leaf spring with shock absorbers and stabilizer bar							
Steering System		Rack & Pinion, Power Assisted							
Turning circle, wall to wall		m	10.58	10.56	11.84	11.92	13.46	13.54	13.46
Turning circle, curb to curb		m	9.62	9.58	10.86	10.94	12.44	12.54	12.44
Brakes System		Dual hydraulic circuit with vacuum servo assistance (ABS on 3.5T)							
Front type		Vented Disc, PF 2 x 48, Øef= 231							
Rear type		Solid Disc, PFC 1 x 46 Øef= 238							
Wheels size	Front	5½ J 15, single			5 J 15, single				
	Rear	5½ J 15, single			5 J 15, twin				
Wheels bolts		5 x M16			5 x M16				
Tyre size		205/70 R 15			195/70 R 15				
FUEL TANK									
Fuel Tank Capacity		ltrs	90, Right side						
PERFORMANCE (at GVW and Std final drive)									
Maximum speed (0% grade) [N2&N3 speed limit at 90 Km/h]	km/h	125	133	133		133			
	MPH	78	83	83		83			
rpm engine at 90 Km/h		2518	2575	2454		2454			
Max ascending grade		%	>30	>30	>30		>30		
Max starting ascending grade		%	>30	>30	>30		>30		
DOOR & SEATING CAPACITY									
Number of seats	1st row	3						3	
	2nd row	N/A	N/A	N/A	3	N/A	3	N/A	

EET

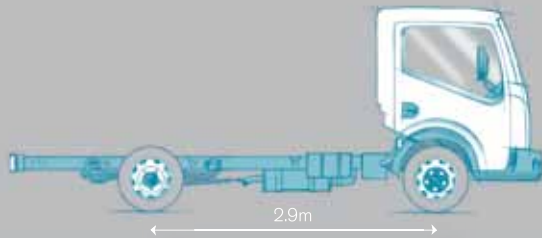
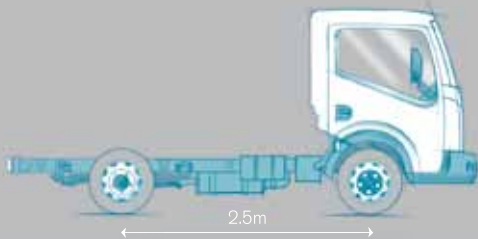
	Double Cab		Single Cab			Double Cab			Single Cab			Double Cab			Single Cab			Double Cab		
ZD30 Kai (Hi)	ZD30 Kai (Hi)						YD25DDTi (Mi)						ZD30 Kai (Hi)							
6S380 (6 sp)	6AS420						6S380 (6sp)													
	3.5						4.5													
	TWIN						TWIN													
	LWB	SWB	MWB	LWB	MWB	LWB	MWB	LWB	MWB	LWB	MWB	LWB	MWB	LWB	MWB	LWB	MWB	LWB	MWB	LWB
							C Section steel longitudinal side members and riveted cross members													
							752													
							128 x 52 x 4													
stabilizer bar							Independent, Double Wishbone with transversal springs, with shock absorbers and stabilizer bar													
							Rigid axle, Parabolic leaf spring with shock absorbers and stabilizer bar													
							Rack & Pinion, Power Assisted													
	13.54	5.28	5.92	6.73	5.96	6.77	10.58	11.87	13.48	11.90	13.51	10.58	11.87	13.48	11.90	13.51				
	12.54	4.79	5.43	6.22	5.47	6.27	9.58	10.86	12.46	10.89	12.49	9.58	10.86	12.46	10.89	12.49				
							Dual Hyd circuit with vacuum servo assist, with ABS													
							Vented Disc, PF 2 x 52, Øef= 234,6													
							Vented Disc, PF 2 x 44, Øef= 241													
							5½ J 16, single													
							5½ J 16, twin													
							6 x M18													
							185/75 R 16													
							90, Right side													
137	136						90						90							
85	85						56						56							
2612	2,642						2350						2501							
>30	>30						>30						>30							
>30	>30						>30						>30							
							3													
3	N/A			3			N/A			3			N/A			3				

NEW CABSTAR CHASSIS VARIANTS

Available in 3.4T, 3.5T and 4.5T GVW variants, with 2.5m, 2.9m and 3.4m wheelbases, single or twin rear wheels and single or double cabs, the New Cabstar offers a truly comprehensive choice to suit your application.

1

3 WHEEL BASES



2

SINGLE AND DOUBLE CAB



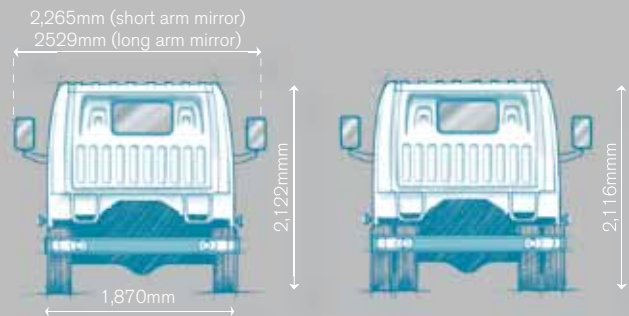
Single cab



Double cab

3

SINGLE AND TWIN REAR WHEELS



Single rear wheels

Twin rear wheels

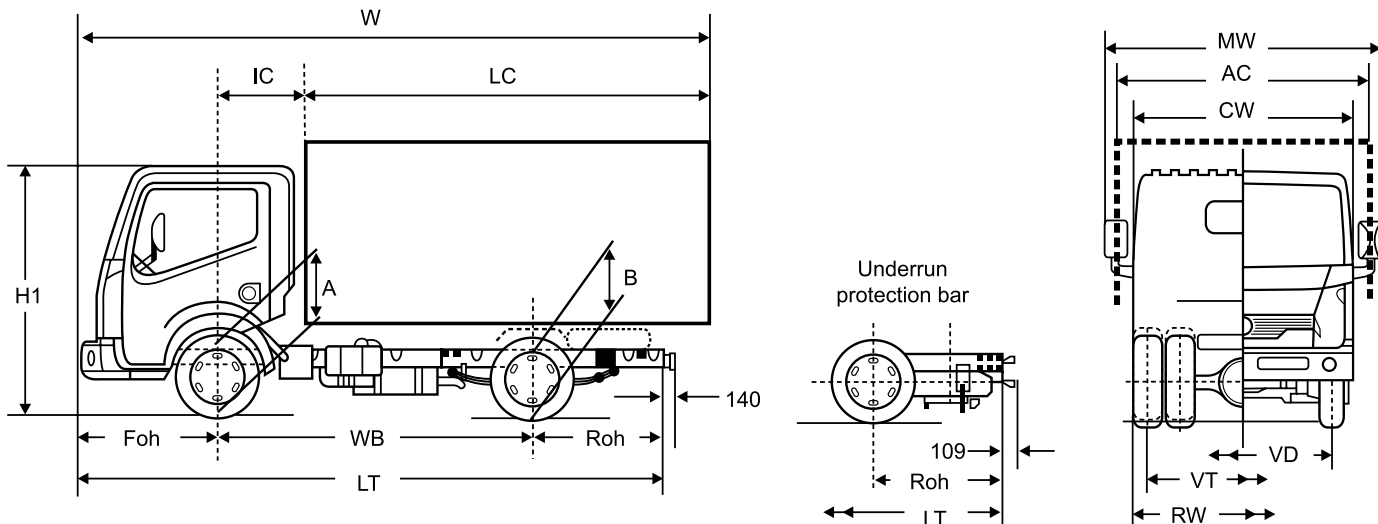
		Single Cab							Double Cab					
		SWB		MWB		LWB			MWB		LWB			
		34.11	35.13	35.15 AT	35.13	35.15 AT	35.13	35.15	35.15 AT	35.13	35.15 AT	35.13	35.15	35.15 AT
WB	Wheelbase	2,500		2,900		3,400			2,900		3,400			
AC max	Max body width	2,200							2,200					
MW	Cabin width inc mirrors	2,265							2,265					
CW	Cabin width exc mirrors	1,870							1,870					
Foh	Front overhang	1,063							1,063					
Roh	Rear overhang	983		1,283		1,583			1,283		1,583			
LT	Overall length	4,546		5,246		6,046			5,246		6,046			
IC	Front axle to rear body	650							1,650					
LC min	Body length min	2,651		2,747		3,311		3,419		4,139		4,253		4,271
LC max	Body length max	3,358	3,476		4,136		4,961			3,136		3,961		

RW	Rear axle width	1,735	1,818	1,816	1,818	1,816	1,818	1,816		1,818	1,816	1,818	1,816
VD	Front track	1,586		1,573							1,573		
VT	Rear track	1,518	1,396	1,394	1,396	1,394	1,396	1,394		1,396	1,394	1,396	1,394
H1	Height (unladen)	2,122		2,116							2,116		
W	Max length	5,070	5,188		5,848		6,673			5,808		6,633	

All figures mm

Gross Vehicle Weight	3,400	3,500							3,500				
Kerb Weight	1,623	1,648	1,784	1,677	1,814	1,697	1,820	1,834	1,852	1,954	1,872	1,960	1,974
Payload	1,777	1,852	1,716	1,823	1,686	1,803	1,680	1,666	1,648	1,546	1,628	1,540	1,526
Gross Train Weight	5,400	7,000							7,000				

All figures kg



Kerb weight: Standard vehicle, without driver, but including fuel, spare wheel and tool kit

Maximum and minimum dimensions are given as a guide, applicable to standard bodies with uniformly distributed loads without cranes lifts etc. Consult the bodybuilder standards for full details.

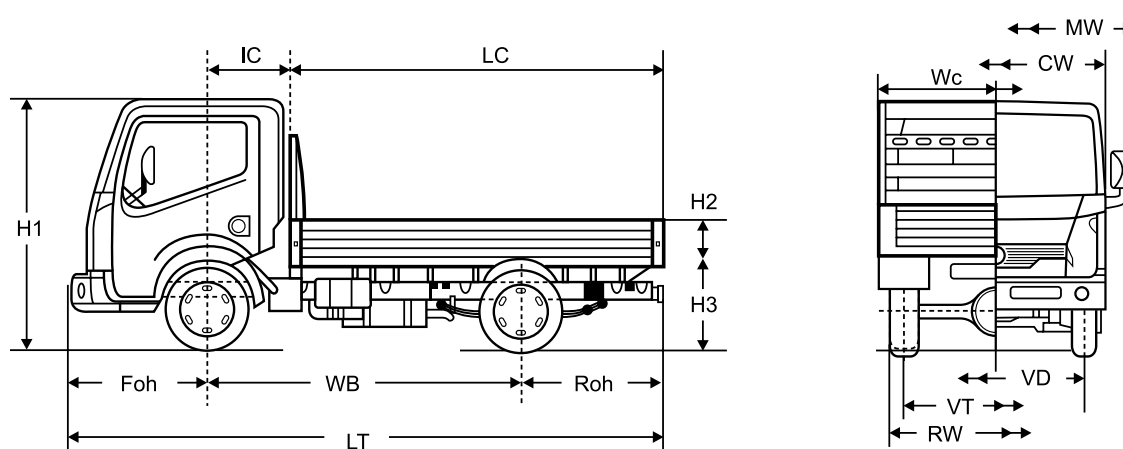
Dropside

		Single Cab							Double Cab				
		SWB		MWB		LWB			MWB			LWB	
		34.11	35.13	35.13	35.15 AT	35.13	35.15	35.15 AT	35.13	35.15 AT	35.13	35.15	35.15 AT
WB	Wheelbase	2,500	2,500	2,900	2,900	3,400	3,400	3,400	2,900	2,900	3,400	3,400	3,400
Wc	Body width	1,900	1,900	1,900	1,900	2,100	2,100	2,100	1,900	1,900	1,900	1,900	1,900
MW	Cabin width inc mirrors	2,265	2,265	2,265	2,265	2,529	2,529	2,529	2,265	2,265	2,265	2,265	2,265
CW	Cabin width exc mirrors	1,870	1,870	1,870	1,870	1,870	1,870	1,870	1,870	1,870	1,870	1,870	1,870
Foh	Front overhang	1,063	1,063	1,063	1,063	1,063	1,063	1,063	1,063	1,063	1,063	1,063	1,063
Roh	Rear overhang	1,347	1,347	1,507	1,507	1,807	1,807	1,807	1,732	1,732	2,002	2,002	2,002
LT	Overall length	4,909	4,909	5,469	5,469	6,269	6,269	6,269	5,694	5,694	6,464	6,464	6,464
IC	Front axle to rear body	687	687	687	687	657	657	657	1,681	1,681	1,681	1,681	1,681
LC	Body length	3,160	3,160	3,720	3,720	4,550	4,550	4,550	2,950	2,950	3,720	3,720	3,720
H2	Body height	400	400	400	400	400	400	400	400	400	400	400	400
H3	Load bed to floor height	918	912	912	917	912	917	917	901	901	912	912	912
RW	Rear axle width	1,735	1,818	1,818	1,816	1,818	1,816	1,816	1,818	1,816	1,818	1,816	1,816
VD	Front track	1,586	1,573	1,573	1,573	1,573	1,573	1,573	1,573	1,573	1,573	1,573	1,573
VT	Rear track	1,518	1,396	1,396	1,394	1,396	1,394	1,394	1,396	1,394	1,396	1,394	1,394
H1	Height (unladen)	2,122	2,116	2,116	2,116	2,116	2,116	2,116	2,116	2,116	2,116	2,116	2,116

All figures mm

Gross Vehicle Weight	3,400	3,500	3,500	3,500	3,500	3,500	3,500	3,500	3,500	3,500	3,500	3,500	3,500
Kerb Weight	1,879	1,921	1,978	2,115	2,120	2,243	2,257	2,095	2,255	2,286	2,261	2,275	2,275
Payload	1,521	1,579	1,522	1,385	1,380	1,257	1,243	1,405	1,245	1,214	1,239	1,225	1,225
Gross Train weight	5,400	7,000	7,000	7,000	7,000	7,000	7,000	7,000	7,000	7,000	7,000	7,000	7,000

All figures kg



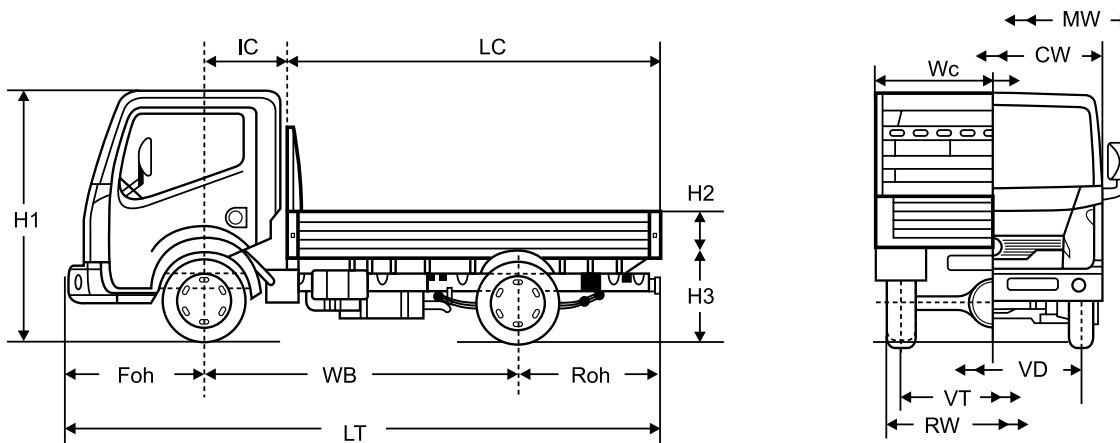
Tipper

		Single Cab				Double Cab					
		SWB		MWB		MWB		LWB			
		34.11	35.13		35.15 AT		35.13	35.15 AT	35.13	35.15	35.15 AT
WB	Wheelbase	2,500	2,500	2,900	2,900	2,900	2,900	3,400	3,400	3,400	
Wc	Body width	1,900	1,900	1,900	1,900	1,900	1,900	1,900	1,900	1,900	
MW	Cabin width inc mirrors	2,265	2,265	2,265	2,265	2,265	2,265	2,265	2,265	2,265	
CW	Cabin width exc mirrors	1,870	1,870	1,870	1,870	1,870	1,870	1,870	1,870	1,870	
Foh	Front overhang	1,063	1,063	1,063	1,063	1,063	1,063	1,063	1,063	1,063	
Roh	Rear overhang	1,337	1,337	1,300	1,300	1,400	1,400	1,400	1,400	1,400	
LT	Overall length	4,899	4,899	5,262	5,262	5,362	5,362	5,862	5,862	5,862	
IC	Front axle to rear body	687	687	700	700	1,610	1,610	1,610	1,610	1,610	
LC	Body length	3,150	3,150	3,500	3,500	2,650	2,650	3,200	3,200	3,200	
H2	Body height	400	400	400	400	400	400	400	400	400	
H3	Load bed to floor height	980	980	950	950	950	950	950	950	950	
RW	Rear axle width	1,735	1,818	1,818	1,816	1,818	1,816	1,818	1,816	1,816	
VD	Front track	1,586	1,573	1,573	1,573	1,573	1,573	1,573	1,573	1,573	
VT	Rear track	1,518	1,396	1,396	1,394	1,396	1,394	1,396	1,394	1,394	
H1	Height (unladen)	2,122	2,116	2,116	2,116	2,116	2,116	2,116	2,116	2,116	

All figures mm

Gross Vehicle Weight	3,400	3,500	3,500	3,500	3,500	3,500	3,500	3,500	3,500	3,500
Kerb Weight	2,198	2,235	2,240	2,377	2,382	2,484	2,402	2,510	2,524	2,524
Payload	1,202	1,265	1,260	1,123	1,118	1,016	1,098	990	976	976
Gross Train weight	5,400	7,000	7,000	7,000	7,000	7,000	7,000	7,000	7,000	7,000

All figures kg



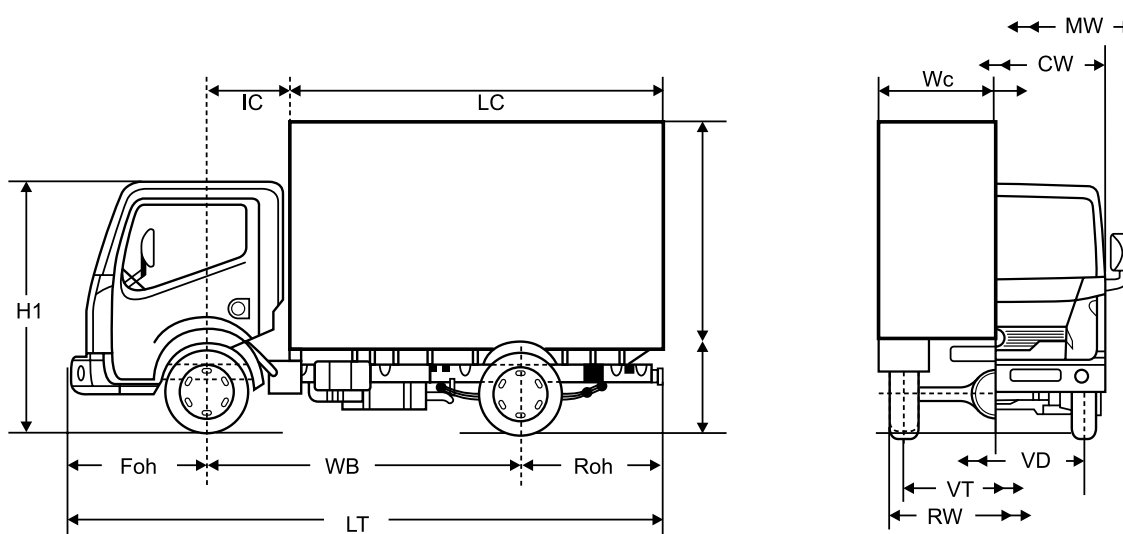
Box Van

		Single Cab					
		SWB		MWB		LWB	
		35.13	35.15 AT	35.13	35.15 AT	35.15	35.15 AT
WB	Wheelbase	2,500	2,500	2,900	2,900	3,400	3,400
Wc	Body width	2,150	2,150	2,150	2,150	2,150	2,150
MW	Cabin width inc mirrors	2,265	2,265	2,265	2,265	2,265	2,265
CW	Cabin width exc mirrors	1,870	1,870	1,870	1,870	1,870	1,870
Foh	Front overhang	1,063	1,063	1,063	1,063	1,063	1,063
Roh	Rear overhang	1,500	1,500	1,600	1,600	1,750	1,750
LT	Overall length	5,062	5,062	5,262	5,262	6,212	6,212
IC	Front axle to rear body	700	700	700	700	700	700
LC	Body length	3,300	3,300	3,800	3,800	4,450	4,450
H2	Body height	2,150	2,150	2,150	2,150	2,150	2,150
H3	Load bed to floor height	880	880	880	880	880	880
RW	Rear axle width	1,818	1,816	1,818	1,816	1,816	1,816
VD	Front track	1,573	1,573	1,573	1,573	1,573	1,573
VT	Rear track	1,396	1,394	1,396	1,394	1,394	1,394
H1	Max Height	2,930	2,930	2,930	2,930	2,930	2,930

Internal Length	3,275	3,275	3,725	3,725	4375	4375
Internal Width	2,075	2,075	2,075	2,075	2075	2075
Internal height	2,100	2,100	2,100	2,100	2100	2100
Load Volume Mcu	14.3	14.3	16.2	16.2	19.0	19.0

Gross Vehicle Weight	3,500	3,500	3,500	3,500	3,500	3,500
Kerb Weight	2,078	2,214	2,122	2,245	2,340	2,354
Payload	1,422	1,286	1,378	1,255	1,160	1,146
GrossTrain weight	7,000	7,000	7,000	7,000	7,000	7,000

All figures kg



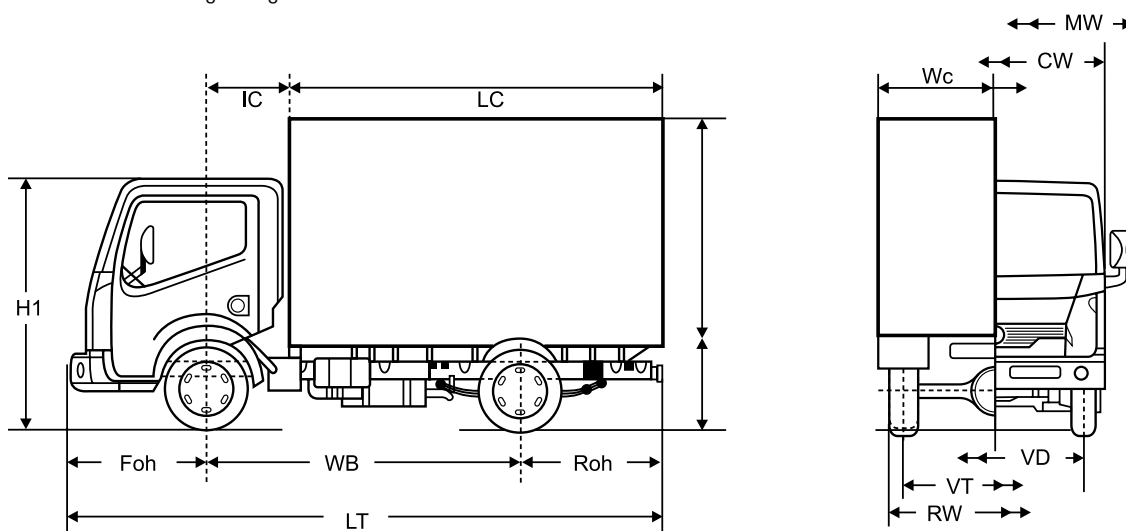
Freezer / Chiller

		Single Cab			
		SWB		MWB	
		35.13	35.15 AT	35.13	35.15 AT
WB	Wheelbase	2,500	2,500	2,900	2,900
Wc	Body width	2,200	2,200	2,200	2,200
MW	Cabin width inc mirrors	2,265	2,265	2,265	2,265
CW	Cabin width exc mirrors	1,870	1,870	1,870	1,870
Foh	Front overhang	1,063	1,063	1,063	1,063
Roh	Rear overhang	1,500	1,500	1,600	1,600
LT	Overall length	4,962	4,962	5,262	5,262
IC	Front axle to rear body	700	700	700	700
LC	Body length	3,300	3,300	3,800	3,800
H2	Body height	2,200	2,200	2,200	2,200
H3	Load bed to floor height	880	880	880	880
RW	Rear axle width	1,818	1,816	1,818	1,816
VD	Front track	1,573	1,573	1,573	1,573
VT	Rear track	1,396	1,396	1,396	1,396
H1	Height (unladen)	2,980	2,980	2,980	2,980

Internal Length	3,164	3,164	3,664	3,664
Internal Width	2,074	2,074	2,074	2,074
Internal height	2,032	2,032	2,032	2,032
Load Volume Mcu	13.9	13.9	15.4	15.4

Gross Vehicle Weight	3,500	3,500	3,500	3,500
Kerb Weight	2,264	2,373	2,376	2,488
Payload	1,236	1,127	1,124	1,012
GrossTrain weight	7,000	7,000	7,000	7,000

All figures kg



Chassis 4.5T

		Single Cab			
		MWB		LWB	
		45.13	45.15	45.13	45.15
WB	Wheelbase	2,900	2,900	3,400	3,400
AC max	Max body width	2,200	2,200	2,200	2,200
MW	Cabin width inc mirrors	2,265	2,265	2,265	2,265
CW	Cabin width exc mirrors	1,870	1,870	1,870	1,870
Foh	Front overhang	1,063	1,063	1,063	1,063
Roh	Rear overhang	1,483	1,483	1,883	1,883
LT	Overall length	5,446	5,446	6,346	6,346
IC	Front axle to rear body	650	650	650	650
Lc min	Body length min	3,219	3,279	4,055	4,129
Lc max	Body length max	4,136	4,136	4,961	4,961

		Double Cab			
		MWB		LWB	
		45.13	45.15	45.13	45.15
		2,900	2,900	3,400	3,400
		2,200	2,200	2,200	2,200
		2,265	2,265	2,265	2,265
		1,870	1,870	1,870	1,870
		1,063	1,063	1,063	1,063
		1,483	1,483	1,883	1,883
		5,446	5,446	6,346	6,346
		1,650	1,650	1,650	1,650
		2,051	2,073	3,033	3,221
		3,136	3,136	3,961	3,961

RW	Rear axle width	1,902	1,902	1,914	1,914
VD	Front track	1,569	1,569	1,569	1,569
VT	Rear track	1,480	1,480	1,492	1,492
H1	Height (unladen)	2,135	2,135	2,135	2,135
W	Max length	5,848	5,848	6,673	6,673

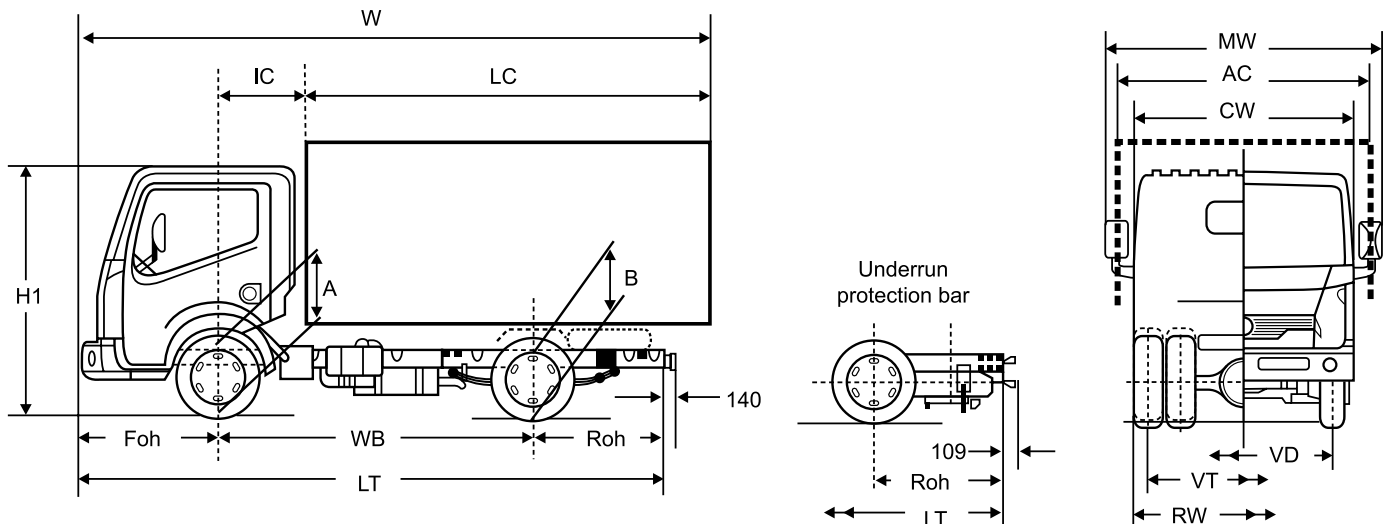
		1,902	1,902	1,914	1,914
		1,569	1,569	1,569	1,569
		1,480	1,480	1,492	1,492
		2,135	2,135	2,135	2,135
		5,808	5,808	6,633	6,633

All figures mm

Gross Vehicle Weight	4500	4500	4500	4500
Kerb Weight	1754	1842	1774	1862
Payload	2746	2658	2726	2638
GrossTrain weight	8000	8000	8000	8000

	4500	4500	4500	4500
	1924	2012	1944	2032
	2576	2488	2556	2468
	8000	8000	8000	8000

All figures kg



Kerb weight: Standard vehicle, without driver, but including fuel, spare wheel and tool kit. Maximum and minimum dimensions are given as a guide, applicable to standard bodies with uniformly distributed loads without cranes lifts etc. Consult the bodybuilder standards for full details.

CABSTAR 3.4T AND 3.5T

Chassis	Wheelbase	Cab	Engine	Power	GVW (kg)	Payload(kg)	Grade	Transmission	Basic Delivered	VED + 1st Reg	Basic On The Road	
Chassis	Short	Single	2.5 dCi	110HP	3,400	1,777	Basic	5 Speed	16,900	265	17,165	
			2.5 dCi	130HP	3,500	1,852	Basic+	5 Speed	18,400	265	18,665	
	Medium	Single	2.5 dCi	130HP	3,500	1,823	Pro	6 Speed	19,350	265	19,615	
			2.5 dCi	130HP	3,500	1,648	Pro	6 Speed	20,350	265	20,615	
		Double	3.0 dCi	150HP	3,500	1,686	Pro	6 Semi-Auto	21,300	265	21,565	
			3.0 dCi	150HP	3,500	1,546	Pro	6 Semi-Auto	22,300	265	22,565	
	Long	Single	2.5 dCi	130HP	3,500	1,803	Pro+	6 Speed	19,750	265	20,015	
			2.5 dCi	130HP	3,500	1,628	Pro+	6 Speed	21,000	265	21,265	
		Double	3.0 dCi	150HP	3,500	1,680	Pro+	6 Speed	20,350	265	20,615	
			3.0 dCi	150HP	3,500	1,540	Pro+	6 Speed	21,600	265	21,865	
		Single	3.0 dCi	150HP	3,500	1,666	Pro+	6 Semi-Auto	21,700	265	21,965	
			3.0 dCi	150HP	3,500	1,526	Pro+	6 Semi-Auto	22,950	265	23,215	
	Tipper	Short	Single	2.5 dCi	110 HP	3,400	1,260	Basic	5 Speed	19,900	265	20,165
					130 HP	3,500	1,300	Basic+	5 Speed	21,400	265	21,665
Medium*		Single	2.5 dCi	130 HP	3,500	1,260	Pro	6 Speed	22,550	265	22,815	
			2.5 dCi	130 HP	3,500	1,118	Pro	6 Speed	23,550	265	23,815	
		Double	3.0 dCi	150 HP	3,500	1,123	Pro	6 Semi-Auto	24,500	265	24,765	
			3.0 dCi	150 HP	3,500	1,016	Pro	6 Semi-Auto	25,500	265	25,765	
Long*		Double	2.5 dCi	130 HP	3,500	1,098	Pro+	6 Speed	24,200	265	24,455	
			3.0 dCi	150 HP	3,500	990	Pro+	6 Speed	24,800	265	25,055	
			3.0 dCi	150 HP	3,500	976	Pro+	6 Semi-Auto	26,150	265	26,405	

*Special build vehicles may be subject to extended delivery. The Basic Delivered prices excludes VAT but includes delivery to the dealership and number plates. The Basic On The Road price excludes VAT but includes delivery to the dealership, number plates, 12 months Vehicle Excise Duty (£210) and Government First Registration Fee of £55.

CABSTAR 3.4T AND 3.5T

Body	Wheelbase	Cab	Engine	Power	GVW (kg)	Payload (kg)	Grade	Transmission	Basic Delivered	VED + 1st Reg	Basic On The Road
Dropside	Short	Single	2.5 dCi	110HP	3,400	1,521	Basic	5 Speed	18,200	265	18,465
				130HP	3,500	1,579	Basic+	5 Speed	19,700	265	19,965
	Medium	Single	2.5 dCi	130HP	3,500	1,522	Pro	6 Speed	20,850	265	21,115
				130HP	3,500	1,405	Pro	6 Speed	21,650	265	21,915
		Double	3.0 dCi	150HP	3,500	1,385	Pro	6 Semi-Auto	22,800	265	23,065
				150HP	3,500	1,245	Pro	6 Semi-Auto	23,600	265	23,865
	Long	Single	2.5 dCi	130HP	3,500	1,380	Pro+	6 Speed	21,450	265	21,715
				130HP	3,500	1,214	Pro+	6 Speed	22,500	265	22,765
		Double	3.0 dCi	150HP	3,500	1,257	Pro+	6 Speed	22,050	265	22,315
				150HP	3,500	1,239	Pro+	6 Speed	23,100	265	23,365
		Single	3.0 dCi	150HP	3,500	1,243	Pro+	6 Semi-Auto	23,400	265	23,665
				150HP	3,500	1,225	Pro+	6 Semi-Auto	24,450	265	24,715

The Basic Delivered prices excludes VAT but includes delivery to the dealership and number plates. The Basic On The Road price excludes VAT but includes delivery to the dealership, number plates, 12 months Vehicle Excise Duty (£210) and Government First Registration Fee of £55.

CABSTAR 4.5T

Body	Wheelbase	Cab	Engine	Power	GVW (kg)	Payload (kg)	Grade	Transmission	Basic Delivered	VED + 1st Reg	Basic On The Road
Chassis	Medium	Single	2.5 dCi	130HP	4,500	2,746	Pro	6 speed	20,350	220	20,570
		Double	2.5 dCi	130HP	4,500	2,576	Pro	6 speed	21,350	220	21,570
		Single	3.0 dCi	150HP	4,500	2,658	Pro	6 speed	20,950	220	21,170
		Double	3.0 dCi	150HP	4,500	2,488	Pro	6 speed	21,950	220	22,170
	Long	Single	2.5 dCi	130HP	4,500	2,726	Pro+	6 speed	20,750	220	20,970
		Double	2.5 dCi	130HP	4,500	2,556	Pro+	6 speed	22,000	220	22,220
		Single	3.0 dCi	150HP	4,500	2,638	Pro+	6 speed	21,350	220	21,570
		Double	3.0 dCi	150HP	4,500	2,468	Pro+	6 speed	22,600	220	22,820

The Basic Delivered prices excludes VAT but includes delivery to the dealership and number plates. The Basic On The Road price excludes VAT but includes delivery to the dealership, number plates, 12 months Vehicle Excise Duty (£165) and Government First Registration Fee of £55.



CABSTAR OPTIONS

	3.4T	3.5T	4.5T	Basic Price
Metallic paint	○	○	○	350
Digital Tachograph*	○	○	●	450
Air Conditioning	○	○	○	700
Passenger airbag		○	○	380
Nissan Connect Satellite Navigation		○	○	500
Tow Bar and Electrics*	□	□	□	460.65

Basic Price excludes VAT. NB: Options shown not applicable to Cabstar Box Van / Refrigerated conversions.

*Digital tachograph is recommended for towing when the GTW is above 3500kg to meet EU and UK legislation.

Dealer fit option prices include fitting but are only a guide. Please check with your local Nissan dealer for exact prices.

Optional - ○ Standard - ● Optional Dealer Fit - □

CABSTAR BOX VAN*

Body	Wheelbase	Cab	Engine	Power	GVW (kg)	Payload (kg)	Grade	Transmission	Basic Delivered	VED + 1st Reg	Basic On The Road
Box Van 14m ³ *	Short	Single	2.5 dCi	130HP	3,500	1,422	Basic +	5 Speed	23,300	265	23,565
14m ³	Short	Single	3.0 dCi	150HP	3,500	1,286	Pro	6 Semi-Auto	26,000	265	26,265
16m ³	Medium	Single	2.5 dCi	130HP	3,500	1,378	Pro	6 Speed	24,450	265	24,715
16m ³	Medium	Single	3.0 dCi	150HP	3,500	1,325	Pro	6 Semi-Auto	26,400	265	26,665
19m ³	Long	Single	3.0 dCi	150HP	3,500	1,160	Pro+	6 Speed	26,150	265	26,415
19m ³	Long	Single	3.0 dCi	150HP	3,500	1,146	Pro+	6 Semi-Auto	27,500	265	27,765

*Special build vehicles may be subject to extended delivery. The Basic Delivered prices excludes VAT but includes delivery to the dealership and number plates. The Basic On The Road price excludes VAT but includes delivery to the dealership, number plates, 12 months Vehicle Excise Duty (£210) and Government First Registration Fee of £55.

Standard Box Van Specification

All body panels in white
 GRP Sheeting on all body panels
 Reinforced with aluminium box struts
 Roof with polyester translucent sheeting reinforced with aluminium top hat section
 300mm Kick Board
 18mm Wizardeck flooring
 Side walls with one set of aeroquip lashing bars and two levels of lathe
 Interior light

Additional cost items (Refer to dealer)

Side Door
 Wood lined interior
 500kg column tail lift (only fitted with Roller shutter)
 500kg cantilever tail lift (any rear closure)
 Rear Step
 Euro door shutter inc lock (no cost option)
 Anodised aluminium side guards
 Roof deflector